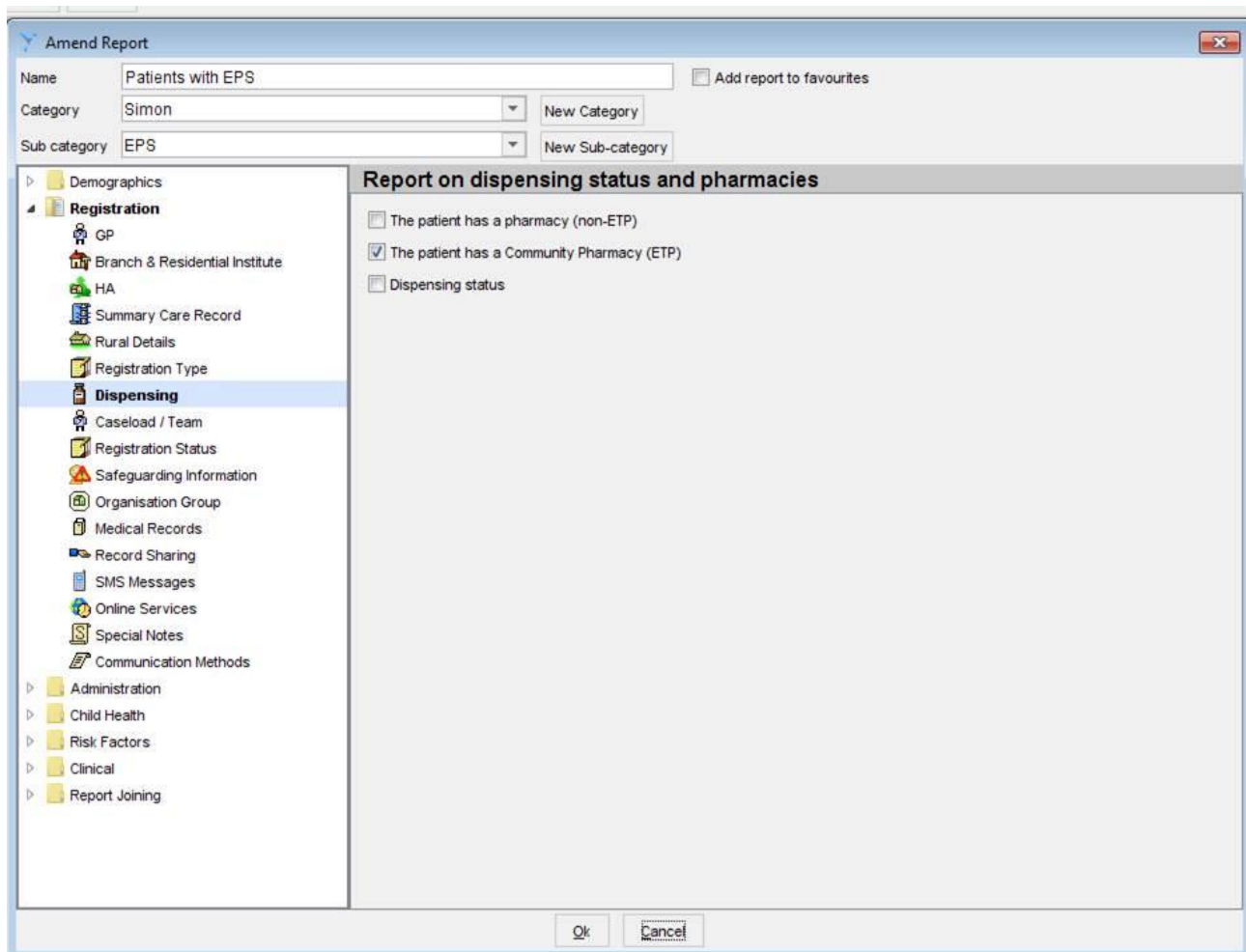


## SystemOne non-nominated repeat patient search

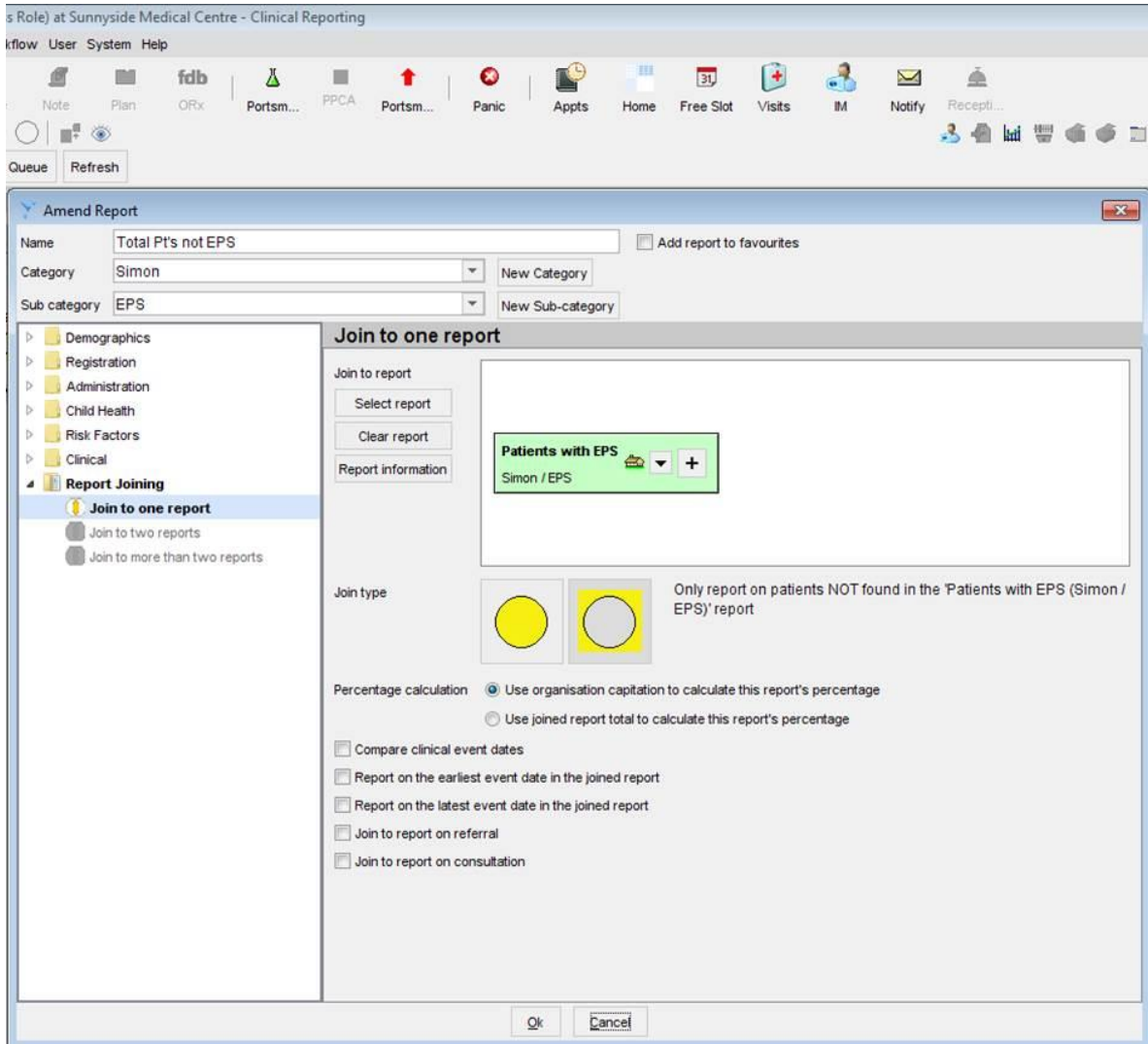
In order to see the number of patients that have not nominated an EPS pharmacy, you will first have to search for those that **have** nominated an EPS pharmacy. You will then have to run a second search that looks at the first search and then deducts that number from shows the total practice population.

The results of this search are particularly useful in identifying those patients which are most likely to engage with EPS and would be ideal candidates to receive EPS promotional text messages. Content of these messages can be found at: [www.nhsbsa.nhs.uk/EPS](http://www.nhsbsa.nhs.uk/EPS)

### Patients with EPS

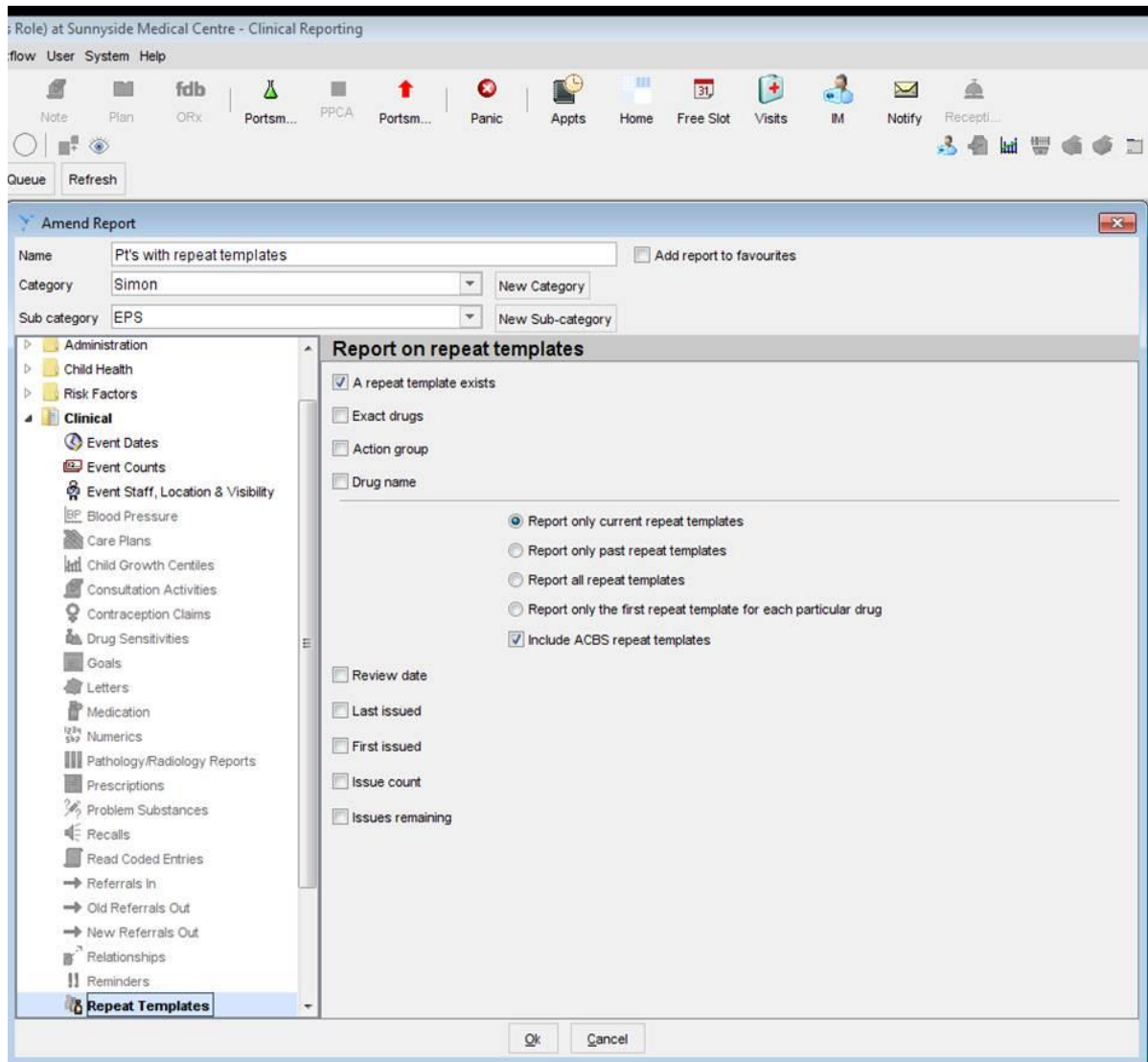


# Total Pt's not EPS



A similar approach has to be taken to find the patients with repeat templates.

## Pt's with repeat templates



To find the patients with repeats that have not made an EPS nomination, you need to take the "Pt's with EPS" and the "Pt's with repeats but not EPS" searches and join the reports. You will need to tell SystmOne to only show you the patients that are not in the EPS search (report one) but do appear within the repeat template search (report two).

# Pt's with repeats but not EPS

**Amend Report**

Name: Pt's with repeats but not EPS  Add report to favourites

Category: Simon

Sub category: EPS

- Demographics
- Registration
- Administration
- Child Health
- Risk Factors
- Clinical
- Report Joining**
  - Join to one report
  - Join to two reports**
  - Join to more than two reports

### Join to two reports

Join to report one

Select report one: **Patients with EPS** Simon / EPS

Report information:

Join to report two

Select report two: **Pt's with repeat templates** Simon / EPS

Report information:

Join type: Report on patients found in report two but not in report one

Percentage calculation:  Use organisation capitation to calculate this report's percentage  
 Use report one total to calculate this report's percentage  
 Use report two total to calculate this report's percentage

Compare clinical event dates of the two reports