

# **Service Level Agreement and Service Specification for the General Practice Community Pharmacist Consultation Service (GP CPCS)**

NHS England and NHS Improvement



# **Service Level Agreement and Service Specification For General Practice Community Pharmacist Consultation Service (GP CPCS) formerly known as the General Practice Digital Minor Illness Referral Enhanced Service (GP DMIRS)**

## **GP Practice Referred Patients with low acuity conditions**

Version number: 1.0

First published: 01 April 2020

Prepared by: Pharmacy Integration

This information can be made available in alternative formats, such as easy read or large print, and may be available in alternative languages, upon request. Please contact Pharmacy Integration on [england.pharmacyintegration@nhs.net](mailto:england.pharmacyintegration@nhs.net)

## Contents

Service Level Agreement and Service Specification .....	1
Contents.....	2
Document Management .....	4
Service Level Agreement .....	5
1. This agreement is between.....	5
2. Purpose .....	5
3. Period .....	5
4. Termination.....	5
5. Obligations.....	6
6. Standards .....	6
7. Eligibility criteria .....	6
8. Confidentiality .....	6
9. Indemnity .....	6
<b>NHS General Practice Community Pharmacist Consultation Service (GP CPCS)</b>	<b>8</b>
1. Service description and background.....	9
2. Aims and intended outcomes of GP CPCS.....	11
3. Service Sign-up – Pharmacy contractors.....	12
4. Service Sign-up – Individual Pharmacists.....	12
5. Service Extension .....	12
6. Receipt of referral from the GP practice.....	13
7. Pharmacist consultation.....	14
Advice and Information.....	15
Core Pharmacist Competencies.....	15
8. Records and Documentation .....	15
9. Escalation Process .....	16
10. Training, premises and other requirements .....	17
11. Service availability .....	18
12. Governance .....	19
13. Service promotion .....	19
14. Evaluation .....	19
15. Payment.....	20
Annex A – Glossary.....	21
Annex B – GP CPCS Patient Flow.....	22
Annex C – GP Notification Form .....	22
Annex D – Key Contacts to be included in a Standard Operating Procedure.....	24

Annex E – List of possible symptoms groups identified for referral to a community pharmacist.....	25
---	----

## Document Management

This document has been reviewed and approved by the following people within the Primary Care Strategy and NHS Contracts Group in the Strategy and Innovation Directorate at NHS England:

Reviewer name	Title/responsibility	Date
Anne Joshua	Head of Pharmacy Integration, NHS England and NHS Improvement	06-02-19
Gill Chambers	A2SI Assurance Lead, Digital Urgent and Emergency Care Pharmacy Urgent Care Delivery Manager, NHS England (London Region), NHS England and NHS Improvement	02-04-19
Jane Horsfall	Programme Lead, Pharmacy Contracts & Projects, NHS England and NHS Improvement	04-04-19
Jill Loader	Deputy Director of Pharmacy Commissioning (England), NHS England and NHS Improvement	25-04-19
Bruce Warner	Deputy Chief Pharmaceutical Officer, NHS England and NHS Improvement	26-04-19
Ed Waller	Director of Primary Care Strategy and NHS Contracts	03-05-19
Raj Patel	Deputy National Medical Director for Primary Care	07-05-19

The following people have completed the relevant sections of the document locally:

Reviewer name	Title/responsibility	Date
Linda Boshier	Business Manager	14 May 2019

# Service Level Agreement

## 1. This agreement is between

**NHS England** (the Commissioner)

NHS England – North East and Yorkshire Waterfront 4, Goldcrest Way, Newburn, Newcastle Upon Tyne NE15 8NY.

**And the Provider:** (the pharmacy) identified by the Organisation Data Service (ODS) code entered on the NHSBSA portal which acts as the formal sign-up to the service.

For the provision of an NHS General Practice Community Pharmacist Consultation Service (GP CPCS). The service is an Enhanced Service as defined by Part 4 paragraph 14(1)(j) - of the Pharmaceutical Services (Advanced and Enhanced Services) (England) Directions 2013 (as amended) and as further detailed in Schedule 1.

By signing up to this Service Level Agreement (SLA), you are agreeing that you fully comply with the Terms of Service as outlined in the NHS (Pharmaceutical and Local Pharmaceutical Services) Regulations 2013 and agree to comply with the full terms and conditions as outlined in this SLA and service specification.

Failure to comply with the full terms and conditions as outlined in this SLA may result in suspension of the pharmacy from providing the service. Before any suspension the pharmacy and Commissioner will discuss the reason for the suspension to identify a possible resolution.

## 2. Purpose

The purpose of the General Practice Community Pharmacist Consultation Service (GP CPCS) is to reduce the burden on General Practice by referring patients requiring advice and treatment for certain low acuity conditions from a GP practice to a community pharmacist. Its aim is to ensure that patients have access to the same levels of care, close to home and with a self-care emphasis.

## 3. Period

This agreement is for the scheme to be available **during all pharmacy opening hours**.

The agreement and service delivery will cover the period **from 1<sup>st</sup> April 2020 to 31<sup>st</sup> October 2020**.

## 4. Termination

One months' notice of termination must be given if the pharmacy wishes to terminate the agreement before the given end date.

The Commissioner may suspend or terminate this agreement forthwith if there are reasonable grounds for concern including, but not limited to,

malpractice, negligence or fraud on the part of the pharmacy, patient safety concerns or issues identified through monitoring and evaluation.

## **5. Obligations**

The pharmacy will provide the service in accordance with the specification (Schedule 1) and ensure that all substantive and locum pharmacists are aware of it and are able to deliver the service.

The Commissioner will manage the service in accordance with the specification (Schedule 1).

## **6. Standards**

The service will be provided in accordance with the standards detailed in the specification (Schedule 1).

## **7. Eligibility criteria**

Service providers will need to satisfy the following to demonstrate ability to take part in GP CPCS:

- The pharmacy is satisfactorily complying with its obligations under Schedule 4 to the Pharmaceutical Services Regulations<sup>1</sup> (terms of service of NHS pharmacists) in respect of the provision of essential services and an acceptable system of clinical governance; and have signed up for GP CPCS service delivery.
- Availability of a consultation room in which to provide the service that meets the requirements set out in Schedule 1, Section 10.1 on page 10 of the service specification.

## **8. Confidentiality**

Both parties shall adhere to applicable data protection legislation including the General Data Protection Regulation 2018 and to the Freedom of Information Act 2000.

Registered pharmacy professionals are expected to follow the most recent General Pharmaceutical Guidance on Confidentiality (May 2017).

Any approaches by the media for comments or interviews about the GP CPCS service must be referred to the Commissioner.

The service provider must have in place a whistleblowing policy. The aim of which is to allow an employee (or locum) to raise at the earliest opportunity, any general concern that they might have about a risk, malpractice or wrongdoing at work, which might affect patients, the public, other staff, or the organisation itself.

## **9. Indemnity**

The pharmacy shall maintain adequate insurance for public liability and professional indemnity against any claims which may arise out of the terms and conditions of this agreement.

---

<sup>1</sup> <http://www.legislation.gov.uk/ukxi/2013/349/contents/made>



Any litigation resulting from an accident or negligence on behalf of the pharmacy is the responsibility of the pharmacy who will meet the costs and any claims for compensation, at no cost to the Commissioner.



# **Service Specification**

## **NHS General Practice Community Pharmacist Consultation Service (GP CPCS)**

### **Pharmacy Local Enhanced Service**

#### **NHS General Practice Community Pharmacist Consultation Service (GP CPCS)**

Version number: 1.0

Adapted from the NHS 111 Referral Service Specification for the London Region

Classification: OFFICIAL

Any questions or queries should be directed to:

Themba Mhlanga - [bekithemba.mhlanga@nhs.net](mailto:bekithemba.mhlanga@nhs.net) – 07710152612

Linda Boshier - [linda.boshier@nhs.net](mailto:linda.boshier@nhs.net) – 0113 824 7233

or

The NHS England Pharmacy Integration Team at:

[england.pharmacyintegration@nhs.net](mailto:england.pharmacyintegration@nhs.net)

## 1. Service description and background

- 1.1. Patients and the general public access community pharmacies for self-care advice and to purchase over the counter medicines. It is however difficult sometimes for patients to know when it might be more appropriate to access GP advice. It is estimated that 6% of all GP consultations could be safely transferred to a community pharmacy<sup>2</sup> (20.4 million appointments per year) and there is good evidence that the advice provided by community pharmacists as part of a consultation about symptoms of minor illness will result in the same outcome as if the patient went to see their GP or attended an Emergency Department.<sup>3</sup>
- 1.2. As part of the Pharmacy Integration Fund programme of work to integrate community pharmacy into local NHS urgent care pathways, a new approach is being taken to create a digital process for sending a “referral” to a community pharmacist instead of booking a GP appointment for a low acuity minor illness assessment.
- 1.3. The term “referral” is used to describe the process where practice staff advise patients that they can attend a local community pharmacy for a consultation with a pharmacist and that personal data about them will be transferred to the pharmacy. The GP practice may use a streaming process or other local protocol to identify patients to be referred dependent on the symptoms declared by the patient. In some instances, this may make use of clinical triage or a referral following an online assessment process. The GP practice is responsible for ensuring the robustness of their chosen method of “referral” to the pharmacy (See Annex A for definitions).
- 1.4. The NHS England GP CPCS will commence from 1st April 2020 to 31st October 2020
- 1.5. The GP Community Pharmacist Consultation Service (GP CPCS) will be commissioned as a Local Enhanced Service under the terms of the Community Pharmacy Contractual Framework, with the aim of ensuring that patients have access to care close to home and with a self-care emphasis.
- 1.6. An electronic transfer of data to support the referral will be sent from the General Practice to a local community pharmacy. Across practices in England there are now GP reception teams that work with care navigators to support the process of booking patients to see the most appropriate member of the multidisciplinary team. Only patients who have been referred from their GP practice are eligible to receive advice and treatment

---

<sup>2</sup> <https://www.england.nhs.uk/gp/gpfv/workload/releasing-pressure/>

<sup>3</sup> <https://bmjopen.bmj.com/content/5/2/e006261>

under this service. Patients will still be able to access advice and support for self-care from any local pharmacy as a walk-in service as usual.

- 1.7. On presentation, the pharmacist will assess the patient, looking for any red flags with reference to the NICE Clinical Knowledge Summaries (CKS), provide relevant self-care advice and support (as detailed in point 1.8) and will refer the patient to another service or healthcare professional, where it is appropriate.
- 1.8. The pharmacist will provide self-care advice and support, including access to printed information and /or electronic resources,<sup>4</sup> to all individuals, if appropriate, on the management of low acuity conditions specified in Annex E.
- 1.9. The end points of the consultation may include:
  - Advice given only
  - Advice and the sale of an Over the Counter (OTC) medicine
  - Advice and referral into a pharmacy local Minor Ailments Service (MAS) (dependent on local commissioning arrangements)
  - Advice and referral into a local Patient Group Direction service (dependent on local commissioning arrangements)
  - Advice and referral back to the patient's GP (pharmacist to arrange appointment for the patient at the patient's own GP – as part of this service)
  - Advice and signpost on to another service.
- 1.10. A GP notification may be required about the consultation depending on outcome to ensure the patient's primary care record held by their GP is updated. Pharmacists will use their clinical judgement to determine when this is appropriate. The notification may be made using the CPCS IT system or the paper form in Annex C, however digital transmission is preferred.
- 1.11. Local clinical governance processes will need to be established to ensure the quality of referrals from GP practices to pharmacies. These will need to be reviewed locally and take into account any lessons learned from the outcomes of the consultation with the pharmacist, including cases that have been closed or cases that have required an escalation.
- 1.12. The patient must be in attendance otherwise the consultation will not qualify as part of the GP CPCS scheme. For patients under the age of 16, pharmacists should use their professional judgement to determine whether the patient needs to be accompanied or not, taking into account the principles of Gillick competence where required.

---

<sup>4</sup> [www.patient.co.uk](http://www.patient.co.uk) or [www.nhs.uk](http://www.nhs.uk)

- 1.13. Pharmacists are not able to divert patients who self-present in the pharmacy with a low acuity condition into CPCS. Those who usually manage their own conditions through self-care and the purchase of OTC or Pharmacy Only medicines should continue to self-manage and treat their conditions as per essential service 6, self-care, of the Community Pharmacy Contractual Framework.
- 1.14. The NHS England GP CPCS will commence from 1st April 2020 to 31st October 2020.
- 1.15. An evaluation of the service will be undertaken, and the required data must be submitted to the NHS BSA to facilitate a robust review and financial appraisal for NHS commissioners. An independent academic review of the service will evaluate patient satisfaction and experience of community pharmacy and GP staff. Pharmacy staff will be required to participate in the evaluation and submit additional data as required.

## **2. Aims and intended outcomes of GP CPCS**

### **2.1. The aims of this GP CPCS service are:**

- To improve access to GPs by diverting appropriate consultations to appropriately trained community pharmacists in a way that is convenient, safe and effective for patients.
- To relieve pressure on GP appointments and create some additional capacity for the practice to book patients into appointments that might otherwise have been filled that day or in a few days' time depending on the nature of the symptoms the patient reports.
- To establish the quality and effectiveness of clinical urgent care services provided by community pharmacy through a referral from a GP practice.
- To enable convenient and easy access to a healthcare professional for patients.
- To identify ways that individual patients can self-manage their health more effectively with the support of community pharmacists and to recommend solutions that could encourage self-care and/or the use of pharmacy as a first point of contact for minor illness symptoms in the future.
- To be cost effective for the NHS when supporting patients with low acuity conditions.

### **3. Service Sign-up – Pharmacy contractors**

Registration is via the NHS Business Services Authority (NHSBSA) website through the page for GP CPCS. N.B. Only pharmacies in specific Primary Care Network areas will be able to register.

### **4. Service Sign-up – Individual Pharmacists**

4.1. Pharmacist sign up and the declaration of competence is via the pharmacy GP CPCS IT System. Individual Pharmacists will be required to declare that they meet the requirements of the service before a referral can be accepted.

4.2. This self-declaration will require that the pharmacist can confirm the following:

- 1) I have read the service specification,
- 2) I am aware of how to access National Centre for Health and Clinical Excellence (NICE) Clinical Knowledge Summaries,
- 3) I am aware of the escalation process should this be required,
- 4) I will only provide this service from the pharmacy's consultation room unless the patient prefers the face to face consultation outside the consultation room,
- 5) I will have access to appropriate IT capability in the consultation room so that the GP CPCS IT System can be used as part of the consultation,
- 6) I can access Summary Care Records (SCR) within the pharmacy,
- 7) I can access the shared NHSmail account specific to the pharmacy premises which facilitates onwards communication to the patient's GP and provides essential backup for electronic transfer of data.
- 8) I will feedback to the GP surgery the outcome of the consultation where appropriate
- 9) I will provide data for evaluation as requested
- 10) I am aware of 'red flag' symptoms indicating that a patient may need referral back to the GP or an urgent care service.

### **5. Service Extension**

In the event that the service is extended, it will be assumed that pharmacy contractors are continuing to provide GP CPCS unless they opt-out by following the process detailed in the run-up to the extension. This does not prevent pharmacists from terminating earlier, as set out in Section 4 of the SLA.

## 6. Receipt of referral from the GP practice

- 6.1. An electronic message will be sent by the GP practice to the pharmacy once patient has consented to the service.
- 6.2. The GP practice will provide the details of the selected pharmacy to the patient, advising them to attend within a set time period. When the patient attends or contacts the pharmacy, the pharmacist should confirm the pharmacy has received an electronic referral from their GP practice.
- 6.3. If a patient attends the pharmacy and declares they have been referred by the GP practice and no electronic referral/email has been received, the pharmacist will contact the GP practice to confirm whether a referral has been made.
- 6.4. If a referral has not been made by the GP practice, any request by the patient is out of the scope of this service, but the pharmacy may choose to make an intervention via an alternative method as part of essential services, e.g. advice, the sale of an over the counter medicine or a supply via a locally commissioned minor ailments service.
- 6.5. During the pharmacy's opening hours, the pharmacy IT System used to receive GP CPCS referrals should be regularly checked, especially within the opening hours of the local GP practices including any enhanced hours they are open, to pick up referrals in a timely manner. This should include when a pharmacy opens and before the pharmacy closes each day.
- 6.6. Where a pharmacy has received a referral from the GP practice and the patient has not attended or contacted the pharmacy on the day the referral was made, the pharmacy should make a reasonable effort (i.e. **three call attempts at least 10 minutes apart**) to contact the patient using the contact details set out in the referral message e.g. before the pharmacy closes for the day. If no contact is then made during the next working day, then the pharmacist should close the referral as 'no intervention made'.
- 6.7. The service will be provided by the pharmacy for all the opening hours of the pharmacy (core and supplementary) including extended hours and any public or bank holidays they are open. It is essential that pharmacist locums are fully briefed and should be able to deliver the service.
- 6.8. See Annex B for a patient flow diagram.

## 7. Pharmacist consultation

- 7.1. The pharmacist will conduct a consultation. This will usually be face to face, but may be over the telephone if appropriate. The pharmacist must, using the CPCS IT system, collect information on the patient's condition and make appropriate records, during the consultation. The pharmacist will assess the patient's condition using a structured approach to respond to symptoms. Where the pharmacist undertakes a telephone consultation but is unable to collect all of the information they require from the patient or they feel that it is clinically appropriate to see the patient before making a decision on their condition, the pharmacist shall conduct a face-to-face consultation..
- 7.2. The pharmacist will ensure that any relevant 'Red Flags' are recognised and responded to as part of the consultation process with particular attention given to symptoms that might indicate sepsis or meningitis.<sup>5</sup> Pharmacists should be able to access the latest information directly from NICE Clinical Knowledge Summaries whilst still with the patient during the consultation.
- 7.3. If at this stage it is identified that the patient needs to be referred to access higher acuity services, the procedure set out in Section 9 should be followed.
- 7.4. The pharmacist will identify any concurrent medication or medical conditions, which may affect the treatment of the patient. This can be done through access to SCR and locally held records where available and where appropriate.
- 7.5. The pharmacist will consider past medical history and current medication to assess appropriateness of any advice given and medicines supplied.
- 7.6. The pharmacist will provide self-care advice on the management of the low acuity condition.
- 7.7. Closing statement. For every consultation the pharmacist should give a closing statement to the patient:

**“IF YOUR SYMPTOMS DO NOT IMPROVE OR BECOME WORSE, THEN EITHER COME BACK TO SEE ME OR SEEK ADVICE FROM YOUR GP”**

**Patients may wish to call 111 or 999 if the matter is urgent and the pharmacist or GP is not available.**

- 7.8. The emphasis of the service is on the consultation and delivery of key messages regarding self-care and patient education. Should medication be required for the presenting condition, then either: a supply under a local Minor Ailments Service (MAS) or a local Patient Group Direction (PGD) service (depending on locally commissioned services), the sale of an OTC or Pharmacy Only product, or referral to an appropriate prescriber should be

---

<sup>5</sup> <https://cks.nice.org.uk/>

considered. The pharmacist is professionally accountable for the clinical judgement and treatment decisions they make.

- 7.9. The patient must not be charged for the consultation that occurs as part of the CPCS referral from a GP practice.

### **Advice and Information**

- 7.10. Every patient who accesses the service will be provided with verbal advice, and printed information sheet(s) relevant to their condition if required. In some cases it may be appropriate to provide electronic information if the patient provides an email address. This information should include self-care messages, expected symptoms, the probable duration of symptoms, and when and where to go for further advice or treatment if needed as part of signposting to other local services.
- 7.11. Every effort should be made to ensure the patient understands the advice provided or is referred onwards if necessary.
- 7.12. Patients should also be informed that community pharmacy is a first port of call for many low acuity conditions.

### **Core Pharmacist Competencies**

- 7.13. Able to communicate with, counsel and advise patients appropriately and effectively on low acuity conditions.
- 7.14. Is highly aware of Red Flag symptoms such as those for sepsis and meningitis.
- 7.15. Able to assess the clinical needs of patients including relevant physical assessment where appropriate and the identification of Red Flags (ref. NICE Clinical Knowledge Summaries).
- 7.16. Able to escalate patients in line with the options described in section 9.
- 7.17. Able to act on referrals from, and make referrals to, other healthcare professionals.
- 7.18. Able to explain the provision of the service and give appropriate self-care advice.

## **8. Records and Documentation**

- 8.1. The pharmacy will maintain a record of the consultation including advice about medicines they already taking or available at home for self-care. In addition, a record of any medicine that is supplied, whether it is suggested for



purchase or as part of a locally commissioned MAS, should be kept. This will be recorded via the CPCS IT System with anonymised data submitted as part of the evaluation.

- 8.2. Patients will be invited to complete a patient survey. The process to access the patient survey will be detailed in a supporting guidance document. If the patient refuses to take part in the survey, this does not stop them from receiving the service.
- 8.3. All relevant records must be managed in line with Records Management Code of Practice for Health and Social Care.<sup>6</sup>
- 8.4. A record of any notifications to GPs or other health care professionals will need to be retained by the pharmacy (e.g. Annex C).

## 9. Escalation Process

- 9.1. There will be times when the pharmacist will need additional advice or will need to escalate the patient to a higher acuity care location (e.g. back to their GP or an Urgent Treatment Centre or A&E).
- 9.2. **Option A)**  
**Refer the patient for an urgent in-hours appointment (Monday to Friday 8:00-18:30):** To escalate a patient during the day, pharmacists should support a patient to make an urgent in-hours appointment with their GP. After agreeing this with the patient, the pharmacist should contact the patient's GP to secure this appointment. The pharmacist may wish to print a copy of the consultation for the patient to take with them to the consultation with their GP. As part of the GP CPCS programme, it is anticipated that GP practices will make appointments available for when the pharmacist decides that the patient needs to be seen by their GP.
- 9.3. **Option B)**  
**Refer patient to A&E or call 999:** If the patient presents after referral from GP with severe symptoms indicating the need for an immediate emergency consultation, the pharmacist should refer the patient to attend A&E immediately or call an ambulance. **The pharmacist must report any such cases to the local NHS England CPCS commissioning team [England.pharmacyandoptometry@nhs.net](mailto:England.pharmacyandoptometry@nhs.net) on the same day as they occur.**
- 9.4. If it is known that a patient has attended CPCS more than twice within any month with the same symptoms and there is no indication for urgent referral, the pharmacist should consider referring the patient to their GP.

---

<sup>6</sup> <https://www.gov.uk/government/publications/records-management-code-of-practice-for-health-and-social-care>

- 9.5. In all circumstances, if the patient presents with symptoms outside the scope of CPCS the patient should be managed in line with the best clinical judgement of the pharmacist (See Annex E for scope of symptom groups).
- 9.6. If the pharmacist suspects that the service is being used inappropriately by patients or carers, they should alert the local NHS England pharmacy commissioning team at the earliest opportunity.
- 9.7. The pharmacist should use their clinical judgement to decide the urgency, route and need for referral.
- 9.8. When referring patients to a GP, pharmacists should not set any patient expectations of any specific treatment/outcome.

## **10. Training, premises and other requirements**

- 10.1. To provide the service, pharmacies must have a consultation room. The consultation room, which can be used to consult with the patient or patient's representative, must comply with the following minimum requirements:
  - a) the consultation room must be clearly designated as an area for confidential consultations
  - b) it must be distinct from the general public areas of the pharmacy premises
  - c) it must be a room where both the person receiving services and the pharmacist providing those services are able to sit down together and talk at normal speaking volumes without being overheard by any other person (including pharmacy staff), other than a person whose presence the patient requests or consents to (such as a carer or chaperone).
- 10.2. The consultation room must also meet the General Pharmaceutical Council (GPhC) Standards for Registered Premises.<sup>7</sup>
- 10.3. The necessary knowledge and skills to provide the service will already be a core competency for all pharmacists, but pharmacists will want to ensure they have an up to date understanding of the service specification and it is recommended that they watch the [CPCS 111 Referral video](#) for background knowledge.<sup>8</sup>
- 10.4. Pharmacists must have access to the SCR within the pharmacy. Ideally this will be accessible in the consultation room.
- 10.5. The pharmacy contractor should have a standard operating procedure (SOP) in place covering the provision of the service. This should include key contact details that are set out in Annex D.

---

<sup>7</sup> <http://www.pharmacyregulation.org/standards/standards-registered-pharmacies>

<sup>8</sup> <https://www.england.nhs.uk/commissioning/primary-care/cpcs/>

- 10.6. Prior to providing the service, the pharmacy contractor should review and make any necessary amendments to their business continuity plan to incorporate appropriate content on the service within the plan.
- 10.7. Pharmacies must have a shared NHSmail mailbox for each pharmacy premises, as a back-up. Pharmacists providing the service must understand how to access both the CPCS IT System and the shared NHSmail mailbox so that they can access all referrals.
- 10.8. The pharmacy contractor must ensure that all pharmacy staff involved in provision of the service are appropriately trained on the operation of the service, including relevant sections of the SOP for the service. It is important that locum pharmacists are made aware of the service and understand the SOP so that they are able to provide the service, including at weekends, Bank and Public Holidays.
- 10.9. Pharmacy owners and pharmacists should make their insurers aware of the provision of the new service.

## **11. Service availability**

- 11.1. The pharmacy contractor should ensure that the service is available throughout the pharmacy's core and supplementary opening hours.
- 11.2. The pharmacy contractor must ensure the service is accessible, appropriate and sensitive to the needs of all service users. No eligible patient shall be excluded or experience difficulty in accessing and effectively using this service due to their race, gender, disability, sexual orientation, religion or belief, gender reassignment, marriage or civil partnership status, pregnancy or maternity, or age.
- 11.3. If the service must be temporarily withdrawn by the pharmacy due to unforeseen circumstances, the pharmacy contractor will ensure the elements of their business continuity plan related to the service are activated. The pharmacy must inform the GP practice(s) directly to temporarily stop referrals.
- 11.4. In the event of the GP practice not getting through to the pharmacy via electronic messaging, or patients reporting that they have been unable to speak to the pharmacist on two consecutive patient referrals, NHS England may investigate this issue and action may be taken in line with existing dispute resolution procedures.
- 11.5. In the event of problems with service provision by a pharmacy, the local NHS England team will assess the ongoing ability of the pharmacy to deliver the service. In the intervening period, the GP practice will be advised not to send referrals to that pharmacy until the issue is resolved.

- 11.6. If the pharmacy contractor wishes to cease to provide this service, they must notify NHS England via email [England.pharmacyandoptometry@nhs.net](mailto:England.pharmacyandoptometry@nhs.net) at least one month's notice must be provided prior to the cessation of service provision.

## **12. Governance**

- 12.1. The pharmacy will report any incidents related to patient safety, the referral process or operational issues via the incident reporting form located within the CPCS IT System.
- 12.2. The service will be subject to assurance, contract monitoring against the service specification and post payment verification by the Commissioner (or the NHSBSA acting on behalf of the Commissioner).
- 12.3. The pharmacist should report any patient safety incidents to the National Reporting and Learning System (NRLS) using usual procedures.

## **13. Service promotion**

- 13.1. Patient access to the service is via referral from their GP practice.
- 13.2. This service must not be actively promoted directly to the public by either the pharmacy contractor or the NHS to ensure that it is only used by patients for cases that have been referred from a GP practice. Communication material that can be used to inform patients about the service will be agreed with the national NHS England Pharmacy Integration programme.

## **14. Evaluation**

- 14.1. The service will be evaluated independently to inform service design and future commissioning decisions. Aspects of the service to be examined will include, but not necessarily be limited to:
- a) Referral rates to community pharmacy
  - b) Patient experience and satisfaction
  - c) Impact on GP in-hours appointments or referrals
  - d) Identification of a clinical pathway for referral to community pharmacy
  - e) Experiences of pharmacy staff and GP practice staff
  - f) Consultation outcome
  - g) Operational aspects and issues with running the service.

14.2. All participating pharmacies must participate in the evaluation.

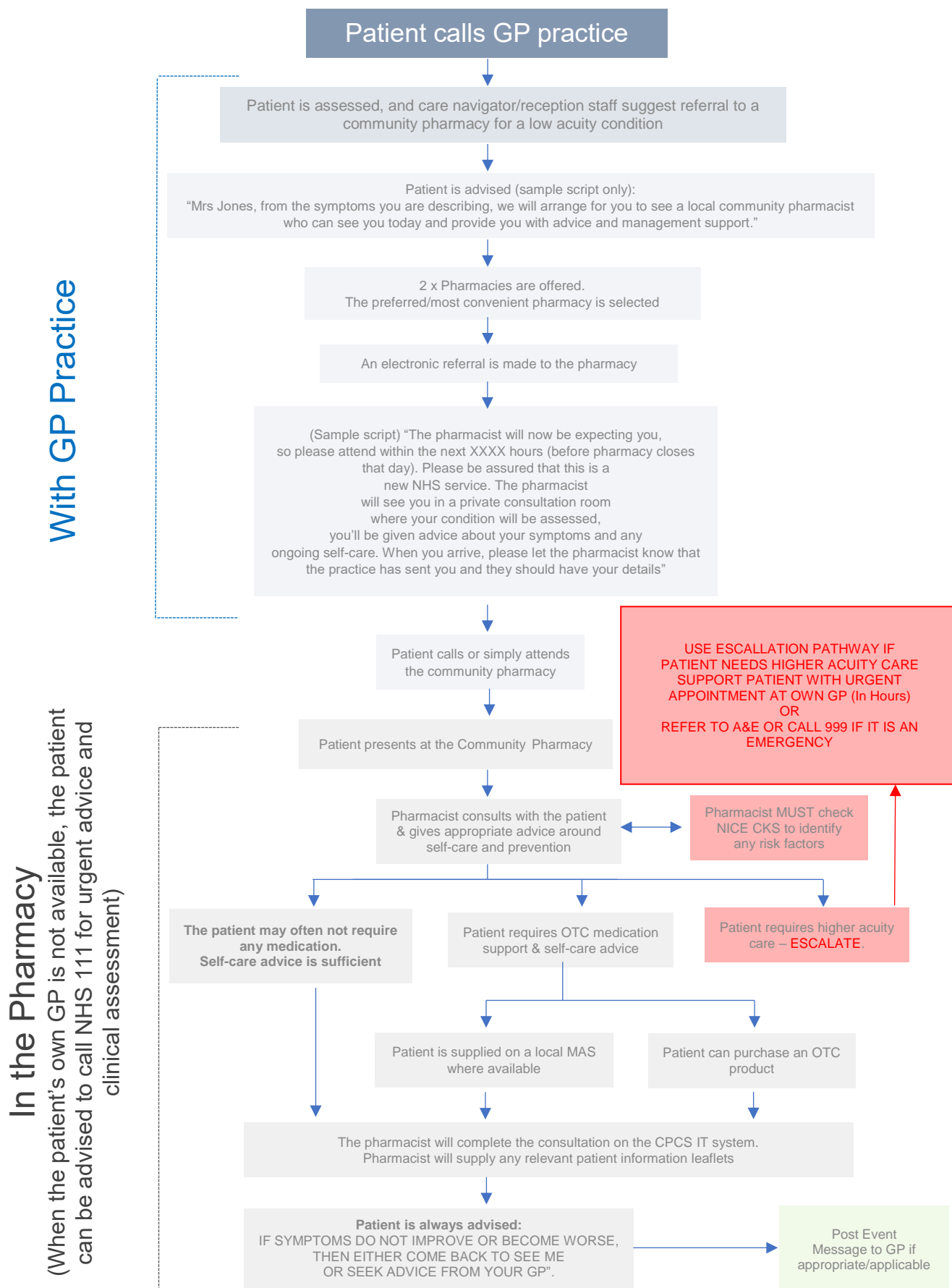
## **15. Payment**

- 15.1. Remuneration will be made to the pharmacy at £14.00 per consultation, for delivery of the service and participating in the evaluation.
- 15.2. Payments for GP CPCS will be made based on the information recorded on the CPCS IT System that will be transferred to the NHS England pharmacy contract team. Pharmacies may be required to undertake an audit for post-payment verification.
- 15.3. Payment will be made to pharmacies on a monthly basis within two months of end of month by NHS England via the NHSBSA. Any payment queries not resolved with NHSBSA will need to be referred to the NHS England commissioning team and will be dealt with in a timely manner.
- 15.4. Pharmacists must record information onto the CPCS IT System during the consultation with the patient present to ensure a full electronic health record is completed appropriate to the consultation.
- 15.5. Claims submitted which relate to consultations over three calendar months old (non-closed referrals) will not be paid.
- 15.6. Any information that has not been recorded on the CPCS IT System and subsequently supplied to NHS England must be anonymised and not contain any patient identifiable information.

## Annex A – Glossary

Term	Definition
CPCS IT system	Pharmacy IT suppliers currently able to provide the CPCS IT system are PharmOutcomes and Sonar. The supplier will be agreed by the NHS England local area dependent on local arrangements
Low acuity	Low medical need
Low acuity conditions	Annex E; list of possible symptom groups
MAS	Minor Ailment Scheme. This may include the use of patient group directions to provide a supply of Prescription Only Medicines (POM) according to a locally agreed protocol
Referral from GP practice	The term “referral” is used to describe the process where practice staff advise patients that they can attend a local community pharmacy for a consultation with a pharmacist and that personal data about them will be transferred to the pharmacy. The GP practice may use a streaming process or other local protocol to identify patients to be referred dependent on the symptoms declared by the patient. In some instances, this may make use of clinical triage or a referral following an online assessment process. The GP practice is responsible for ensuring the robustness of their chosen method of “referral” to the pharmacy
Self-Care	Self-care is a term used to include all the actions taken by people to recognise, treat and manage their own health. They may do this independently or in partnership with the healthcare system, such as community pharmacies
Urgent Treatment Centres	<p>Urgent treatment centres are a facility you can go to if you need urgent medical attention but it's not a life-threatening situation.</p> <p>The NHS currently offers a mix of walk-in centres, urgent care centres, minor injury units and urgent treatment centres, all with different levels of service.</p> <p>By the end of 2019, these will all be called urgent treatment centres (previously known as Walk in Centres)</p>

## Annex B – GP CPCS Patient Flow



## Annex C – GP Notification Form

PAPER VERSION - IF REQUIRED i.e. this is within the CPCS IT System and will be sent to the GP at the end of the consultation if this is set up within the IT System (local variations may apply)

### NHS Community Pharmacist Consultation Service - Notification of patient attendance to general practice

GP Notification Form												
To (GP Practice Name)												
Address (Including Postcode)												
Patient Name												
Date of Birth												
Address (Including Postcode)												
This patient was provided with a supply of:												
Medicine											Quantity	
at this pharmacy on DD /MM /YYYY												
Additional comments												

To GP Practice: - Medication has been supplied to this patient following an assessment of their needs with the information available to the pharmacist at the time. If you wish to flag to urgent and emergency care providers that it is inappropriate for a patient to be referred for urgent supplies of medicines, please consider the use of a Special Patient Note (SPN).

Pharmacy Name		Telephone	
Pharmacist Name			
NHSmail Address			
Address			

**Confidential**



**Annex D – Key Contacts to be included in a Standard Operating Procedure**  
**CPCS Project Management and NHS England Commissioning Team contact details:**

Bekithemba Mhlanga Primary Care Manager Pharmacy and Optometry

[bekithemba.mhlanga@nhs.net](mailto:bekithemba.mhlanga@nhs.net)

or

Linda Bosher Primary Care Business Manager – Pharmacy and Optometry

[linda.bosher@nhs.net](mailto:linda.bosher@nhs.net)

or

[England.pharmacyandoptometry@nhs.net](mailto:England.pharmacyandoptometry@nhs.net)

## **Annex E – List of possible symptoms groups identified for referral to a community pharmacist**

NOTE: Individual GP practices will determine which symptom groups they will refer to pharmacy. This service will inform a national approach to symptom groups to include for referral from General Practice to a pharmacy. General principles are to exclude:

- Under 1 years
- Anyone presenting with high temperature unresponsive to antipyretic medicines (self-declared)

This list is not exhaustive but reflects the case mix based on current NHS 111 referrals:

Acne, Spots and Pimples  
Allergic Reaction  
Ankle or Foot Pain or Swelling  
Athlete's Foot  
Athlete's Foot Bites or Stings, Insect or Spider  
Blisters  
Constipation  
Cough  
Diarrhoea  
Ear Discharge or Ear Wax  
Earache  
Eye, Red or Irritable  
Eye, Sticky or Watery  
Eyelid Problems  
Hair loss  
Headache  
Hearing Problems or Blocked Ear  
Hip, Thigh or Buttock Pain or Swelling Itch  
Knee or Lower Leg Pain  
Lower Back Pain  
Lower Limb Pain or Swelling  
Mouth Ulcers  
Nasal Congestion  
Rectal Pain  
Scabies  
Shoulder Pain  
Skin, Rash  
Sleep Difficulties  
Sore Throat  
Tiredness  
Toe Pain or Swelling  
Vaginal Discharge  
Vaginal Itch or Soreness  
Vomiting  
Wound Problems - management of dressings  
Wrist, Hand or Finger Pain or Swelling